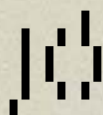


ALTAMIRA

Developed by

MAB



Jackson
Clements
Burrows
Architects

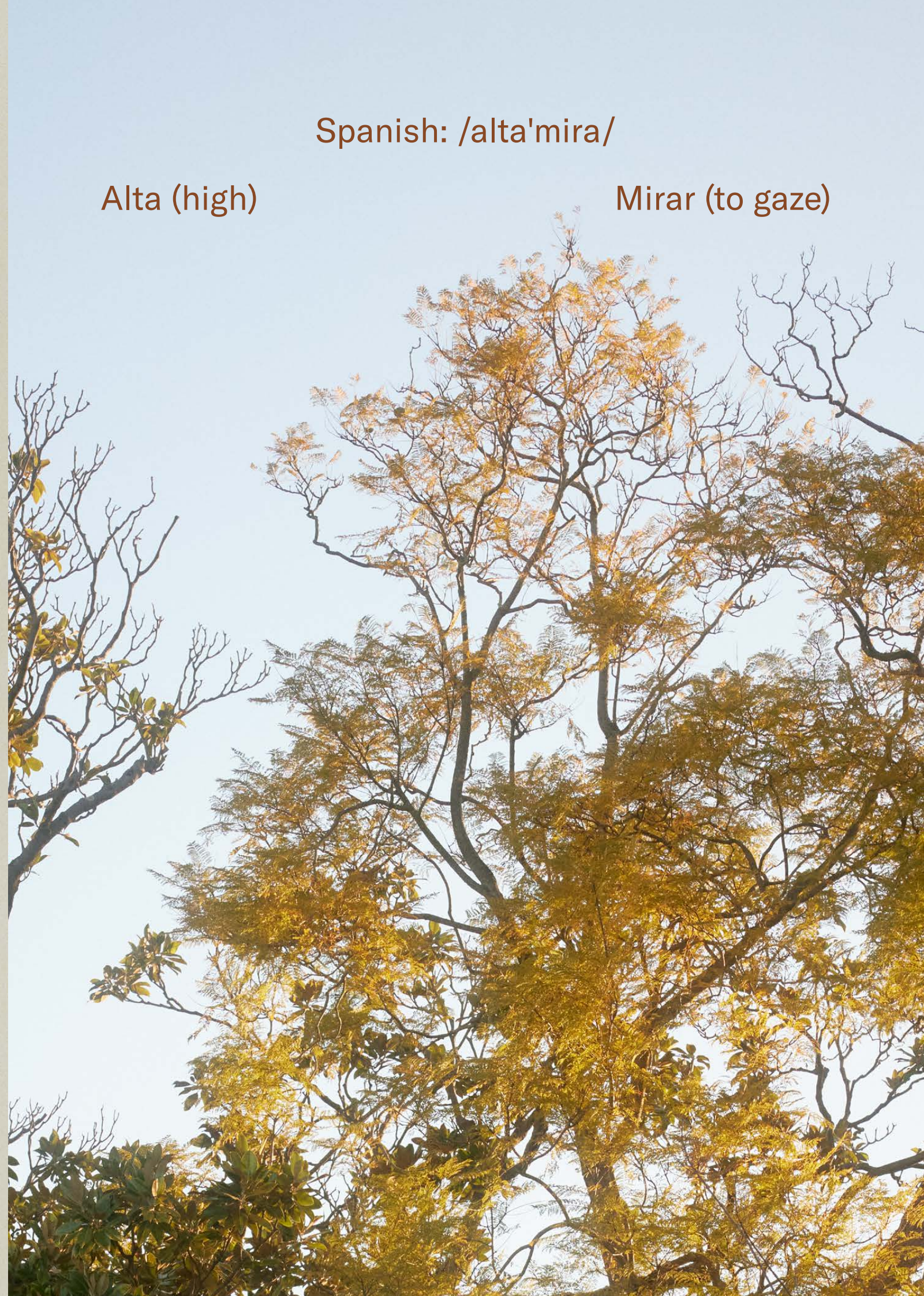


Eckersley
Garden
Architecture

Spanish: /alta'mira/

Alta (high)

Mirar (to gaze)



Introduction	5
Design	15
Interiors	27
Colour Schemes	45
Gardens	57
Sustainability	67
Location	73
Project Team	87

Since 1995, MAB has honed its expertise in residential living, to establish a reputation for design excellence, construction quality and enduring partnerships. As one of Melbourne’s most awarded developers, MAB is thrilled to bring this legacy to Canterbury with our esteemed partner, the Canterbury Baptist Church.





“Altamira is a true expression of Canterbury. Its history, verdant gardens and charming village character have been embraced in the creation of these beautiful homes.”

Andrew Buxton, Managing Director, MAB





Overlooking Canterbury Gardens, Altamira sits comfortably amongst the stately homes that adorn the tree-lined streets of Boroondara.



Design



Project Vision
About the Design



Project Vision

Developed by MAB and an award winning team of design professionals, Altamira showcases intelligent architecture and interiors crafted with durable, timeless materials. Blending seamlessly into the local setting, these homes feature ample natural light and spacious living areas, with high levels of privacy and security.

Each home is immersed within a lush private garden, creating a calm, serene environment, which is optimised for daylight and thermal comfort.

Altamira has been designed with community in mind. All homes are grouped around three separate lobbies, each with between two and six homes per floor, to promote a close-knit, neighbourly atmosphere. Secure basement parking and private storage are located directly below each lobby, providing convenient access for your daily errands. A resident's workshop and pet washing facility are also located at the basement level.



Residents and guests are welcomed by a beautiful entry experience. The Canterbury Road entrance features a striking lobby with a double-height atrium, timber panelled walls and cozy seating. From Boronia Street, residents enjoy a lush meandering pathway with private outdoor seating.



The contemporary architecture by Jackson Clements Burrows Architects is harmoniously blended with heritage elements, including the neo-gothic façade of the Sunday School Building and the mid-century architecture of the Canterbury Baptist Church, designed by respected architect Keith Reid.



Natural light and privacy are expertly balanced, with the generous double glazed windows also maximising the uninterrupted views of Canterbury Gardens.



Interiors



Interior Design Approach
Interior Spaces



Artist Impression.

Designed by the award-winning interior design practice at Jackson Clements Burrows Architects, three different interior schemes are available, allowing residents to customise finishes to their taste and embellish their homes with options that are attuned to individual needs.

“Our interior design objective at Altamira was to create a range of comfortable homes that are a modern interpretation of family living. Rigorous planning combined with classic material selections will see these homes exude an air of quality, warmth and peacefulness.”

Chloe Hinchliffe
Interior Designer
JCB Architects

The interiors embody the ‘essence of home’, creating generous, light filled spaces, perfect for entertaining.



A tactile and luxurious material palette includes timber, natural stone and plush carpets, which create warm and inviting interior spaces.



Artist Impression.

Spacious master bedrooms feature walk in wardrobes and the texture and elegance of fluted glass, providing privacy to the bedroom.



Striking a balance between style and functionality, ensuites reflect a commitment to the finer details. Spacious vanities incorporate ample storage, while the feature lighting and fluted glass are both elegant and practical.



Artist Impression.

Featuring a variety of configurations, each apartment has been designed to optimise the individual orientation and view. Apartments feature open-plan living, large kitchens and studies, catering perfectly to different families and lifestyles.





Artist Impression.

Terrace Gardens

Ground floor terrace apartments feature extensive planting, providing an outdoor environment perfect for entertaining guests or relaxing in the sun with a book.

Spacious kitchens are cleverly designed for functionality. Large islands, fully integrated appliances and plenty of storage are perfect for those who love to spend time cooking.



Colour Schemes



Aloe Scheme
Birch Scheme
Oak Scheme

The three interior schemes at Altamira feature a refined blend of timeless materials and classic hues. The Aloe scheme is a modern, mid-century palette interpretation, embellished with timber accents and pale green joinery.



Artist Impression.



Artist impression.

A neutral scheme, Birch offers a clean, light palette of materials which draws inspiration from classic Victorian architecture.



For those who prefer a more traditional home, the Oak scheme provides a palette of rich hues and warm timber tones to create a sophisticated yet welcoming home.





Artist impression.



Gardens

Central Garden
Planting Palette

The landscape design creates a variety of outdoor spaces providing residents with multiple opportunities to connect with nature.



Artist Impression.



Altamira features thoughtfully designed communal outdoor spaces that foster a sense of community and strong connection to nature.

The Central Garden provides over 280 square meters of garden and outdoor seating, perfect for neighbours and friends to socialise or admire the spectacular and treasured mid-century stained-glass façade of the Church Worship Hall.

Artist Impression.

Balcony Gardens

Select apartments feature generous planter boxes along balconies, equipped with automatic irrigation systems.

Hardy, layered planting will in time, create a stunning green perimeter that cascades over the planter boxes.

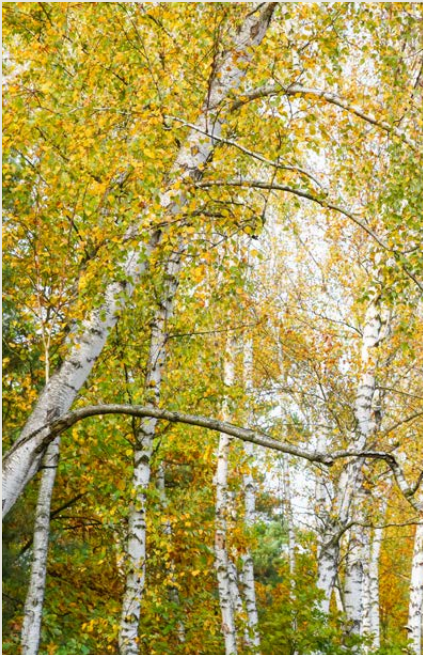


Artist Impression.

Planting Selection

“A combination of evergreen and deciduous plants and trees have been selected to connect the old with the new and ensure the project blends seamlessly into the existing streetscape.”

Scott Leung
Eckersley Garden Architecture



Left; Laceleaf Japanese Maple.
This page clockwise; Virginia Creeper, Foxtail Fern, Silver Birch.

Sustainability



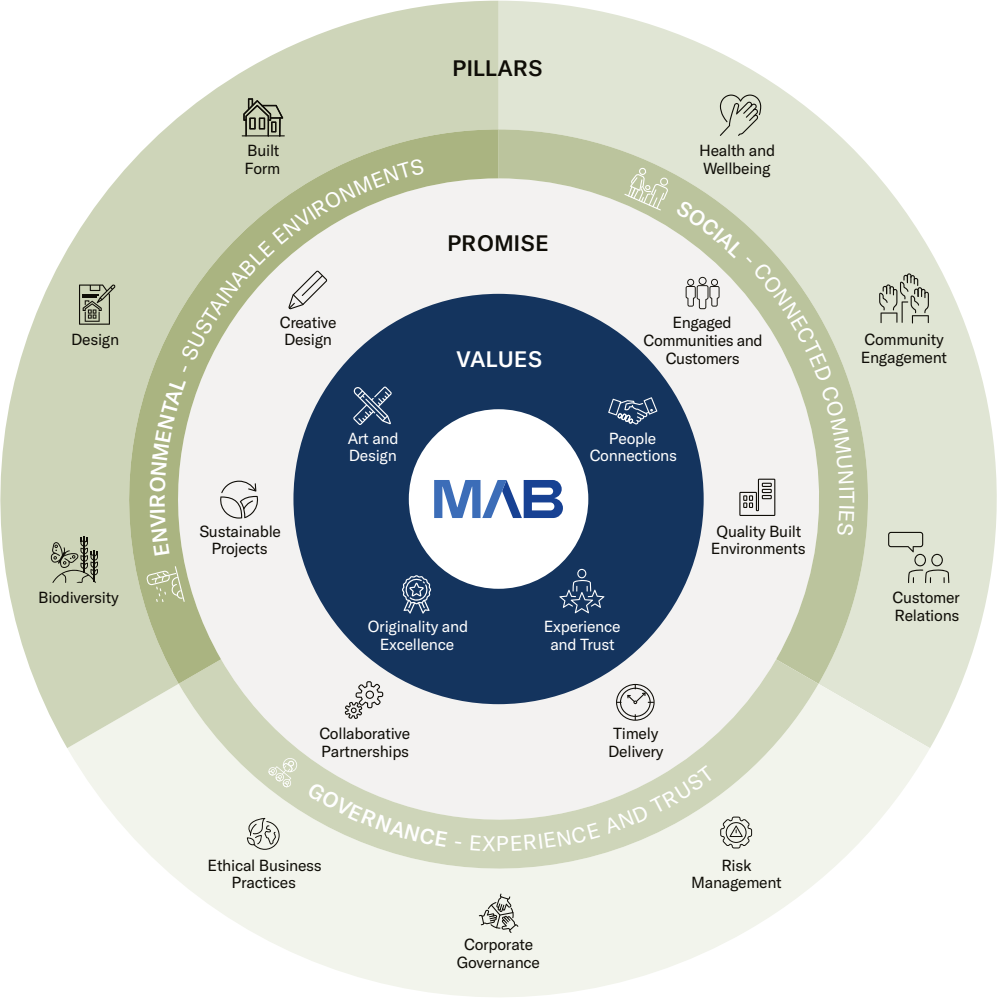


Altamira's passive environmental design will deliver a lifetime of thermal comfort, lower energy bills and low greenhouse gas emissions. Exceeding the City of Boroondara's best practice design guidelines, Altamira is an exemplar of sustainable development.

- A leading NatHERS rating of 7.9 star (average) providing energy efficient and comfortable homes that cost less to run.
- Rainwater harvesting storage tanks reticulated into the building for landscape irrigation.
- High performance double glazing and weather-tight window seals.
- Electric vehicle charging infrastructure (individual charger equipment is a purchaser option).
- Rooftop solar photovoltaic system powers common areas such as basement and outdoor lighting.
- Fully electric operation, including induction cooking, heat pump hot water and climate control systems.
- Water sensitive planting selection.
- Taps, toilets and dishwashers carry a minimum four-star WELS rating.
- All interior paints, carpets, adhesives and sealants will be low volatile organic compound, improving indoor air quality.

MAB is committed to a future where property development enriches lives and landscapes and where our projects are not simply structures but living examples of design excellence, sustainability and flourishing communities.

The MAB sustainability strategy is embedded in our operations to strengthen business, enhance social value and reduce environmental impact.



Location

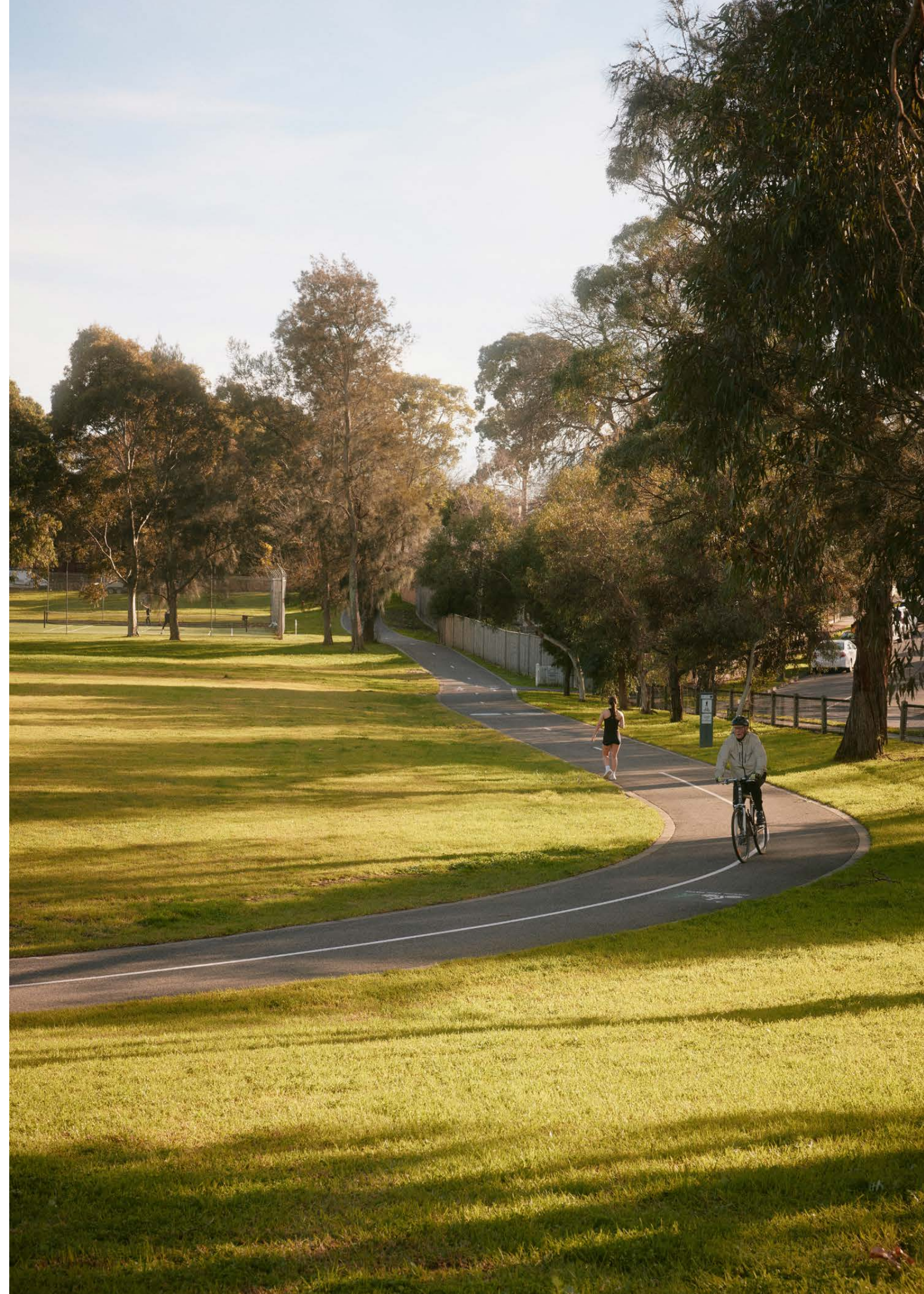
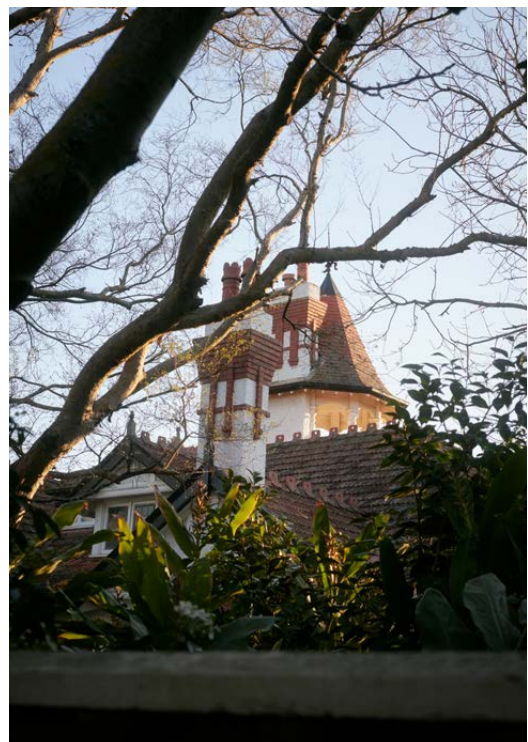


Local Area
Amenities

Living at Altamira is simply convenient. A short stroll through Canterbury Gardens leads to the renowned Maling Road village where you can get your morning coffee, pick up dinner from the local butcher or relax with a glass of wine with friends.

The Anniversary Trail connects right outside your home and a number of local sports clubs are within walking distance.

Should you be planning a night out in the city or a trip to the MCG, Canterbury station is just across the Gardens, where you can board a train and be in town quickly and easily.





Artist Impression.

Transport

Canterbury Station	300m
109 Tram	1.1km
70 Tram	1.4km

Shopping Villages

Maling Rd	300m
Whitehorse Rd Balwyn	1.1km
Camberwell Junction	2.5km
Glenferrie Rd Hawthorn	3.8km

Schools

Strathcona Baptist Grammar School	1.1km
Canterbury Primary School	1.2km
Canterbury Girls Secondary College	1.3km
Camberwell High School	1.4km
Camberwell Grammar	1.7km
Camberwell Girls Grammar School	2km

- Parks, Reserves
- Shopping Villages
- Roads
- Trams
- Trains
- Walking Trails



1



2



3



4



5



6

- 1 Lennox Wine
- 2 Rivoli Cinema
- 3 Coffee at Alleycat Cafe
- 4 Camberwell Market
- 5 Xocolatl Artisan Chocolates
- 6 Canterbury Gardens









Project Team

MAB
JCB
EGA



MAB Developer



Awards

2023	Escala, NewQuay — Gold Winner Melbourne Design Awards Architecture, Mixed Use
2022	Escala, NewQuay — Winner High Density Development UDIA Awards for Excellence Urban Development Institute of Australia (Victorian Division)
2019	Elm & Stone, NewQuay — Silver Winner Melbourne Design Awards Architecture, Multi Residential, Constructed
2018	Banksia, NewQuay — Winner Good Design Awards Architectural Design Commercial & Residential
2018	Banksia, NewQuay — Gold Winner Melbourne Design Awards Architecture & Interior Design, Residential
2017	Promenade Aqui, NewQuay — Silver Winner Melbourne Design Awards Architecture Residential, Constructed
2015	Monument Park, NewQuay — Gold Winner Melbourne Design Awards for Urban Design
2014	The Quays, NewQuay — Marion Mahony Award for Interior Architecture Multiple Housing Award The Australian Institute of Architecture

Established in 1995, MAB is one of Australia’s leading property developers known for reputable quality and excellence.

MAB has been developing Melbourne’s highest-calibre residential projects for over two decades, partnering with government, landowners, acclaimed local architects and the community to create contemporary, award-winning residences. We take great pride in shaping the fabric of the built environment while creating safe, sustainable and prosperous communities for generations to come.

Today, our diversified portfolio exceeds \$17 billion spanning masterplanned communities, residential apartments, townhouses, commercial offices, business parks, retail and investments.



JCB Architect



Awards

2024	Sweetwater House — AIA Victorian Architecture Awards COLORBOND Award for Steel Architecture
2024	Sweetwater House — AIA Victorian Architecture Awards Residential Architecture, Houses (New), Commendation
2021	Divided House — AIA National Architecture Awards Interior Architecture, Commendation
2021	Divided House — AIA Victorian Architecture Awards Residential Architecture, Houses (New)
2021	La Trobe University North and South Apartments — AIA Victorian Architecture Awards Residential Architecture, Multiple Housing
2021	Divided House — AIA Victorian Architecture Awards The Marion Mahony Award for Interior Architecture
2020	Monash University Gillies Hall — AIA National Architecture Awards Residential Architecture, Multiple Housing, Commendation
2020	Monash University Gillies Hall — AIA Victorian Architecture Awards Interior Architecture Award

JCB is an award-winning architecture, interior design and urban design practice established in 1998. The practice has developed a well-recognised expertise in residential architecture, undertaking projects across a variety of scales, from luxury residential homes to some of Melbourne’s most coveted multi-residential projects.

At JCB we are driven by core design principles that allow us to explore each new project afresh. Our approach is site sensitive, engaged with local climatic conditions and adaptive to contextual opportunities. We believe intelligent design has an impact, regardless of scale or typology.



EGA Landscape Architect



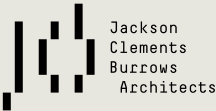
Awards

2022	Autumn House — Houses Awards Garden or Landscape, Winner
2018	Australian Case Study Garden — Melbourne International Flower and Garden Show City of Melbourne Award of Excellence, Best in Show
2018	Australian Case Study Garden — Melbourne International Flower and Garden Show Gold Show Garden, Winner

Eckersley Garden Architecture is an award-winning landscape design practice and works on a variety landscape designs, ranging from small residential gardens to large commercial and multi-residential projects.

With more than 30 years of experience in design, sustainable garden principles, horticultural science and building construction, EGA is a leader in landscape design. At EGA we work in close collaboration with each of our clients with the ultimate goal to provide a connection to nature, a refuge from the outside world and a vital space to breathe and just be.

Developed by



The information, images and illustrations contained in this brochure has been prepared by MAB Corporation and MAB Property Developments Pty Ltd (“MAB”, “we”, “our” or “us”) in good faith and with due care and is for promotional purposes. Any details of the project, artistic impressions and drawings used herein have been developed prior to completion of the project and are a current representation, superseding any previous iterations, of the project plans, specifications and configurations including design and extent of tiling, paving, flooring, carpet, bulkheads, balustrades, fire sprinklers and services equipment are subject to change. MAB does not warrant or represent that the project will be developed in accordance with the details, or the accuracy of any information contained herein and does not accept any liability for any error, discrepancy, negligence or otherwise. Internal areas calculated are in accordance with the Property Council of Australia Method of Measurement. The information contained herein does not constitute all, or any part of, an offer for any property referred to in this brochure. Views shown are indicative only and are based on the site at the time the image is produced. Landscapes may change and a view which is unrestricted may be restricted in the future. MAB does not warrant the accuracy of the view contained herein and does not accept any liability for any discrepancy or otherwise in the depiction of the view. Purchasers must not rely on these being the final views upon completion. June 2025.

Note: Artist Impression images are inclusive of purchaser options — refer to the contract of sale for standard specification.

altamiracanterbury.com.au