

# ALTAMIRA

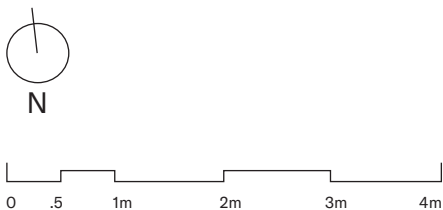
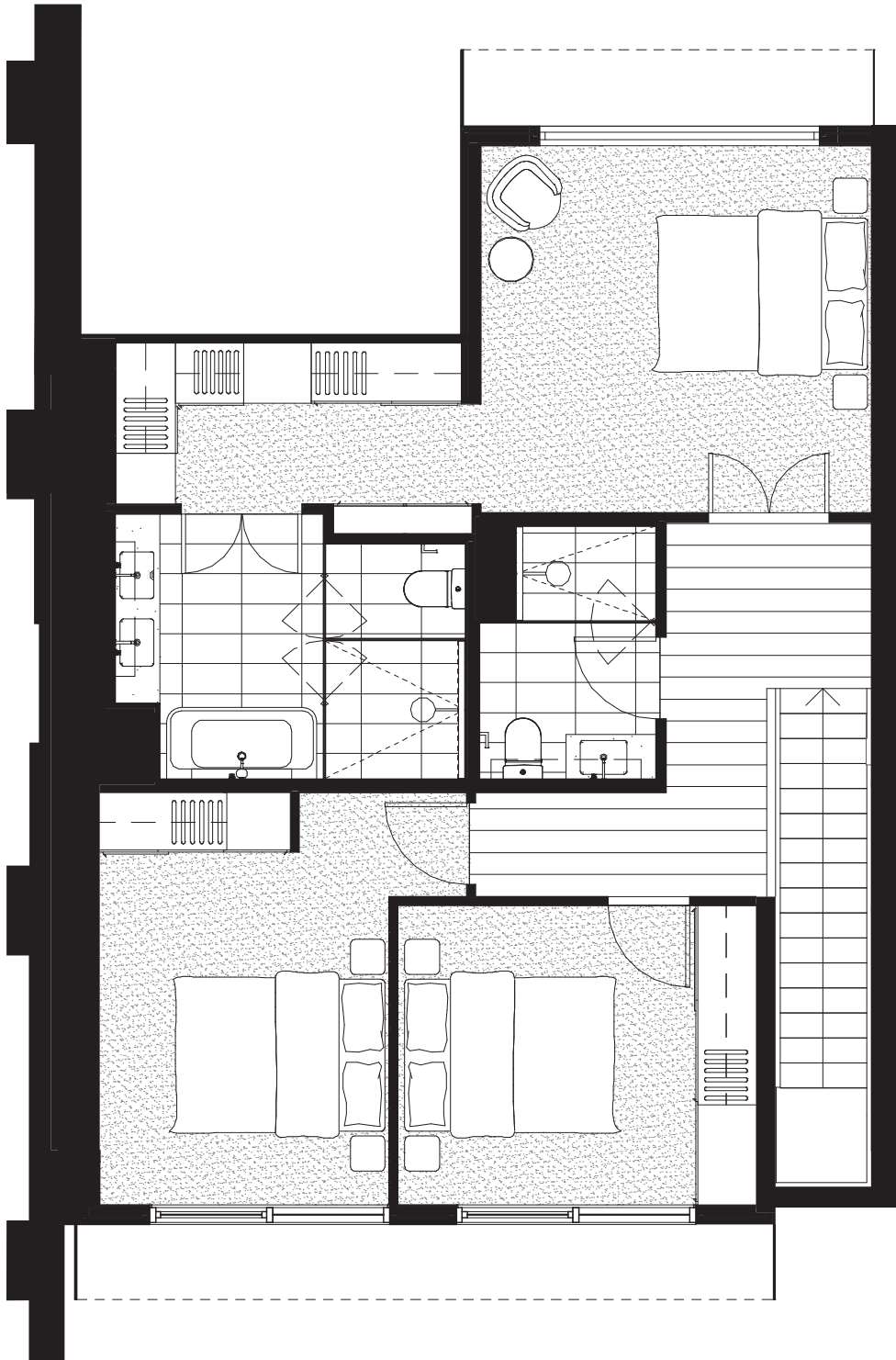
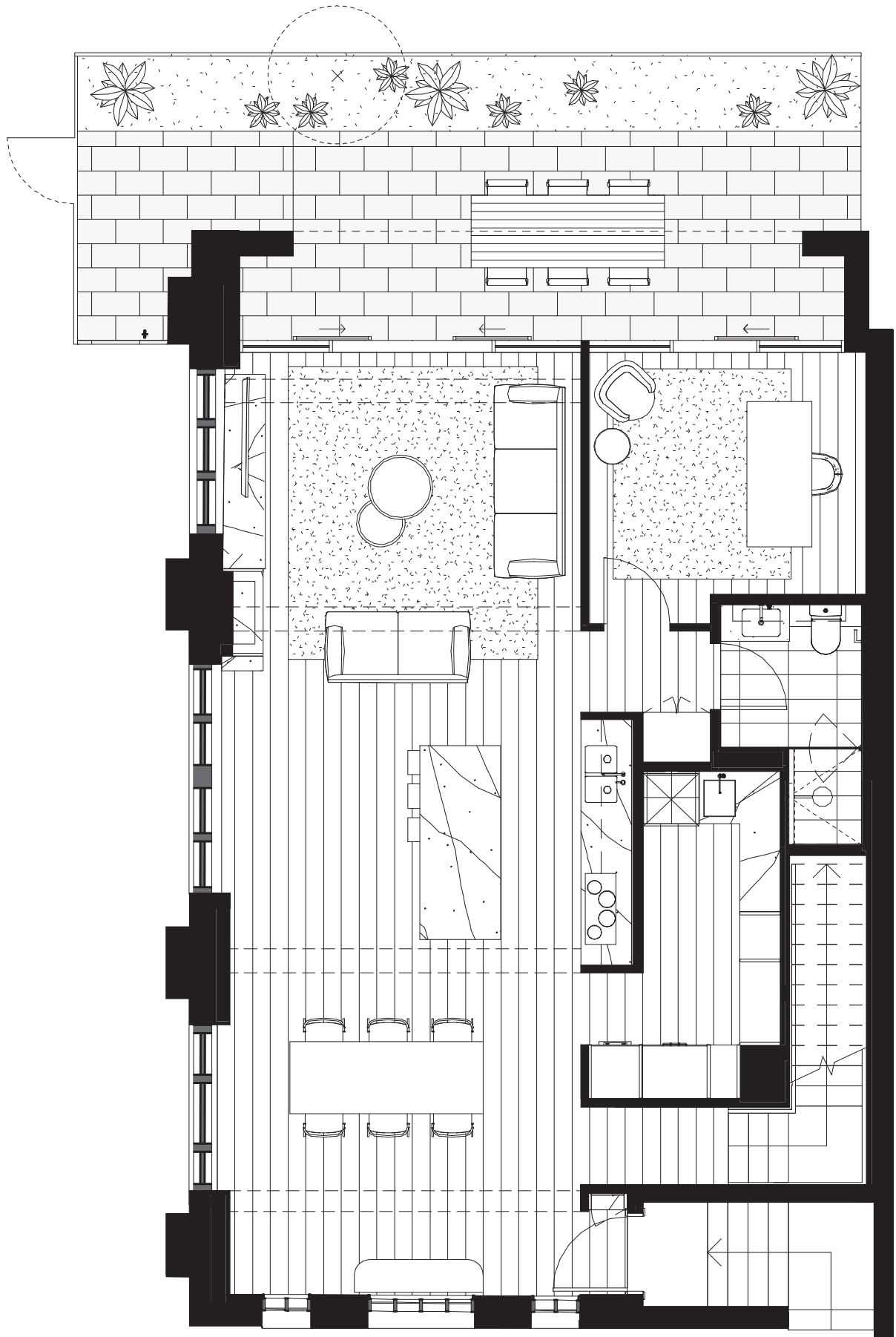
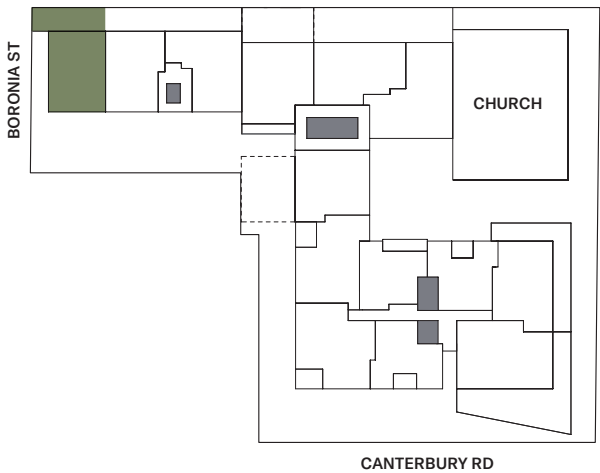
Developed by  
**MAB**

Jackson  
Clements  
Buccows  
Architects

Eckersley  
Garden  
Architecture

## Townhouse G.01 3 Bed, 3 Bath, Study, 3 Car

|          |                     |
|----------|---------------------|
| Internal | 186.5m <sup>2</sup> |
| External | 36m <sup>2</sup>    |
| Total    | 222.5m <sup>2</sup> |



The information, images and illustrations contained in this brochure has been prepared by MAB Corporation and MAB Property Developments Pty Ltd ("MAB", "we", "our" or "us") in good faith and with due care and is for promotional purposes. Any details of the project, artistic impressions and drawings used herein have been developed prior to completion of the project and are a current representation, superseding any previous iterations, of the project plans, specifications and configurations including design and extent of tiling, paving, flooring, carpet, bulkheads, balustrades, fire sprinklers and services equipment are subject to change. MAB does not warrant or represent that the project will be developed in accordance with the details, or the accuracy of any information contained herein and does not accept any liability for any error, discrepancy, negligence or otherwise. Internal areas calculated are in accordance with the Property Council of Australia Method of Measurement. The information contained herein does not constitute all, or any part of, an offer for any property referred to in this brochure. Views shown are indicative only and are based on the site at the time the image is produced. Landscapes may change and a view which is unrestricted may be restricted in the future. MAB does not warrant the accuracy of the view contained herein and does not accept any liability for any discrepancy or otherwise in the depiction of the view. Purchasers must not rely on these being the final views upon completion. June 2025.